

Secure Project Management with PS8 & PC-Admin

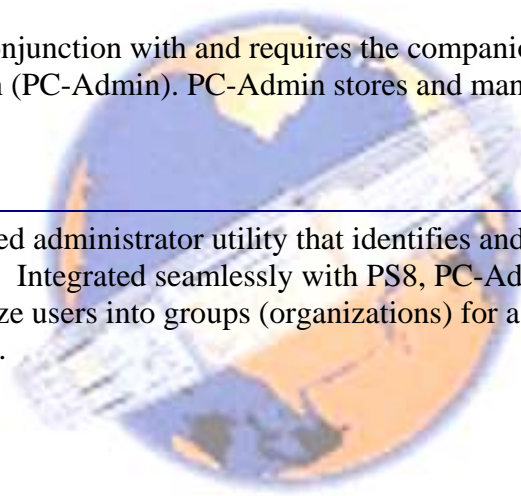
Security with PS Suite Release 2

New in PS8 Version 8.5 is the concept of Access Control Lists (ACL). Now, rather than just controlling whether a project, resource table, or configuration file is available, read-only, or unavailable, you can establish and control many individual permissions for individuals or groups within your organization. Before users can open access-controlled files, they must log in with a user ID and password, identifying themselves as a user who either does or does not have specific access permissions.

This feature works in conjunction with and requires the companion product, Project Communicator – Admin (PC-Admin). PC-Admin stores and manages the access control list.

PC-ADMIN

PC-Admin is a web-based administrator utility that identifies and enforces security throughout all PS8 files. Integrated seamlessly with PS8, PC-Admin enables administrators to organize users into groups (organizations) for assigning access control permissions to PS8 files.



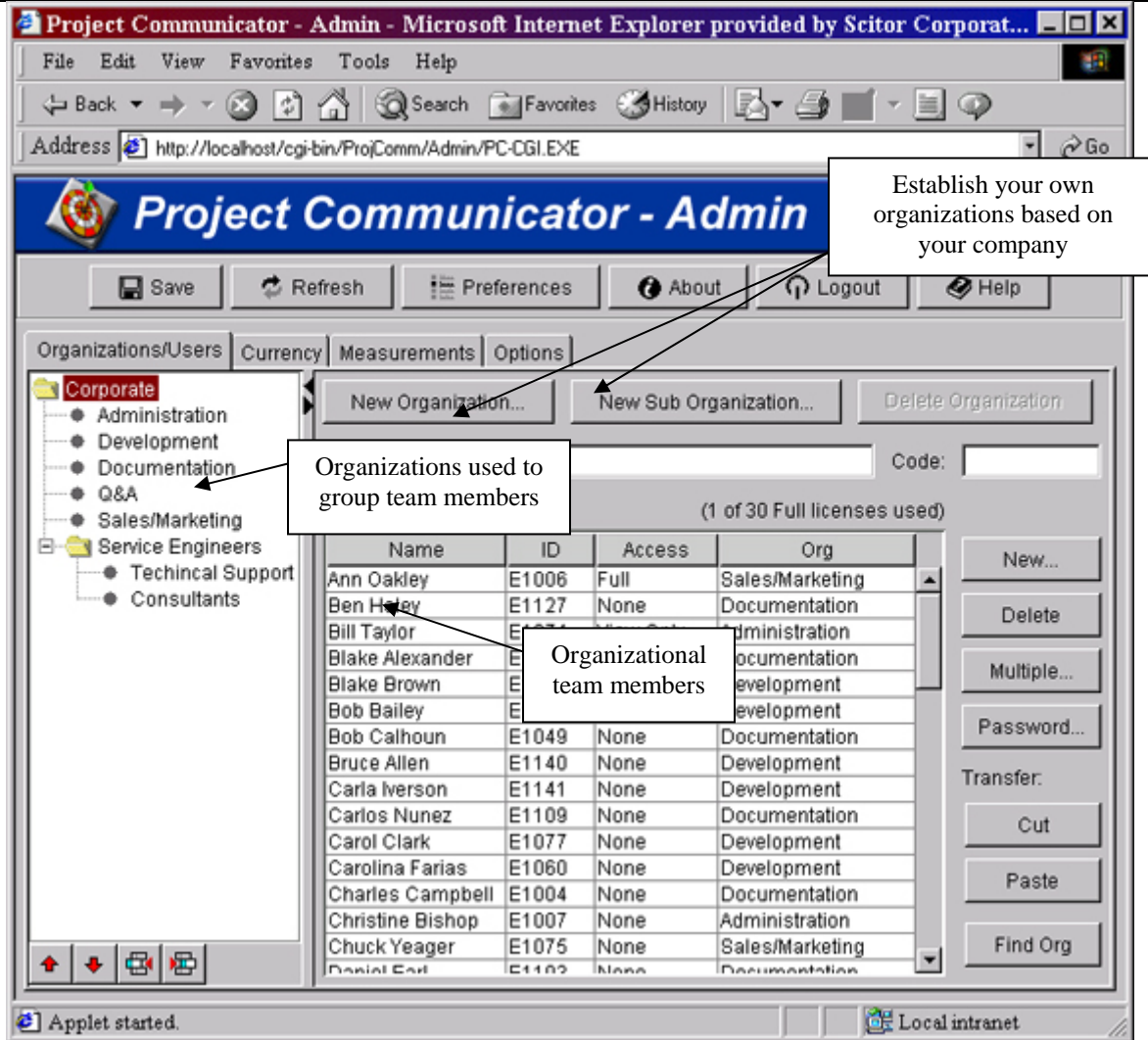


Figure 1. PC-Admin Configuration Screen

For use with PS8 Version 8.5, PC-Admin is used as a straightforward solution to organizing your team members in multi-level organizational units. Once you have defined the organizations applicable to your company, it is simply a matter of assigning the individuals to their respective departments. After individuals belong to specific organizations, you can then assign permissions within PS8 Version 8.5 to access specific projects, resource files, and configuration files based on specific individuals and/or specific organizations.

PS8 VERSION 8.5

Offering the most comprehensive set of project management features available on the market, PS8 Version 8.5 provides both Critical Path and Critical Chain scheduling engines; a built-in, robust report writer; ability to define an unlimited amount of user-defined fields, formulas, filters; and unparalleled customization to fit any type of business.

Before you can assign individual and/or group permissions to your project files, PS8 requires you to log in and identify yourself to the system.

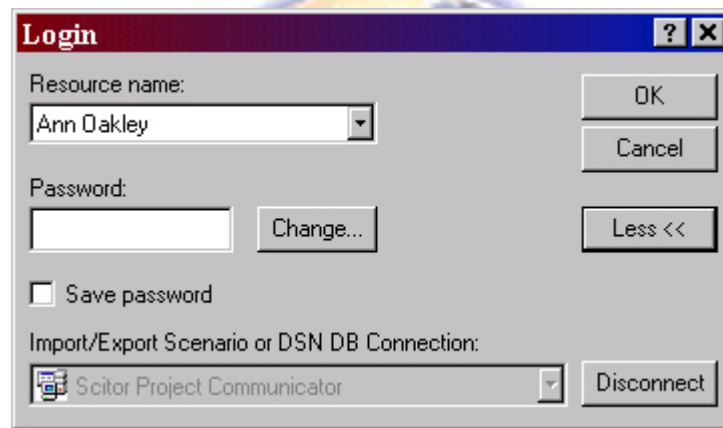


Figure 2. PS Suite Release 2 Login Dialog Box

Once you are logged in, you may then access the ACL and assign individual and/or group permissions to your PS8 Version 8.5 files.

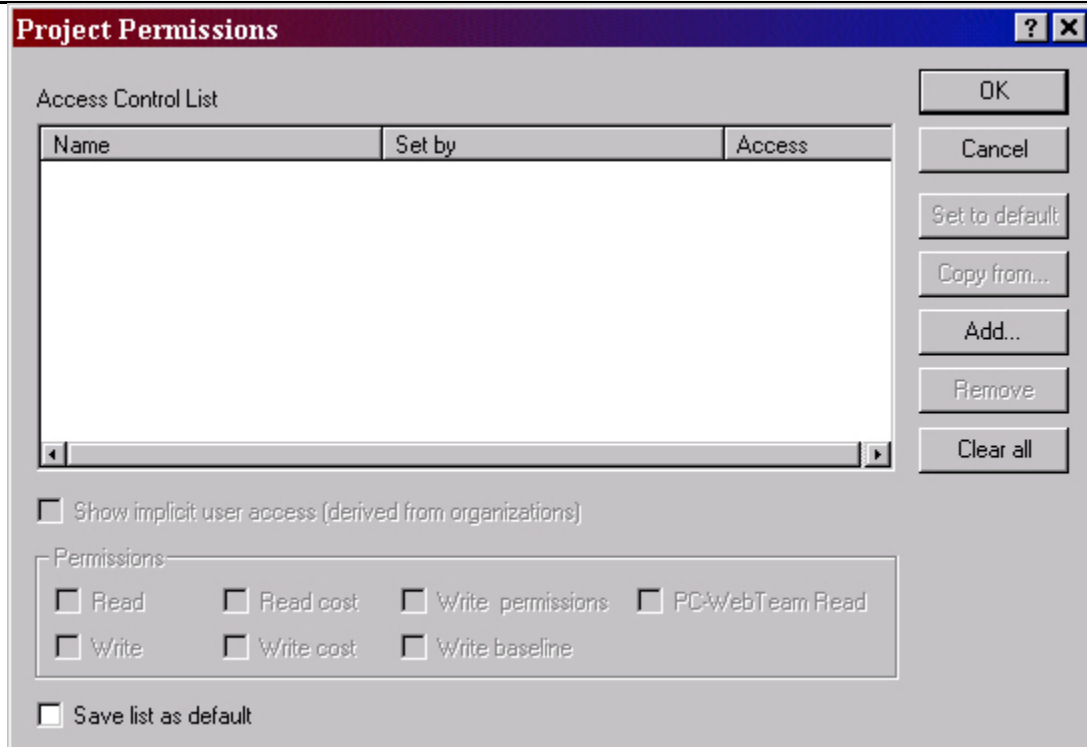


Figure 3. PS8 Version 8.5's Project Permissions Dialog Box

From within PS8 Version 8.5, any project, resource, or configuration file can be secured by assigning individual and organizational access, thus preventing your sensitive data falling into the wrong hands. By clicking the Add... button, PS8 Version 8.5 displays the list of organizations and their respective individuals that were created using PC-Admin.



Figure 4. Add Members Dialog Box

By selecting an organization or specific individuals, you can precisely establish who has access and what type of access to your project. PS8 Version 8.5 offers the following levels of access to PS8 data:

- **Read:** Gives users the ability to open and view project or resource table data (other than cost data).
- **Write:** Gives users the ability to modify and save project, resource, or configuration data (other than cost data). In projects and the resource table, granting 'Write' permission automatically grants 'Read' permission as well.
- **Read Cost:** Gives users the ability to view project or resource table cost data.
- **Write Cost:** Gives users the ability to modify and save project or resource table cost data.
- **Write Permissions:** Gives users the ability to modify and save project or resource table access control permissions.
- **Write Baseline:** Gives users the ability to modify and save project baselines.
- **PC-WebTeam Read:** Gives users the ability to view project data in PC-WebTeam. PC-WebTeam is PC-Inform's team member task assignment and time reporting tool. This permission enables a project manager to control which PC-WebTeam members can view this project's data.

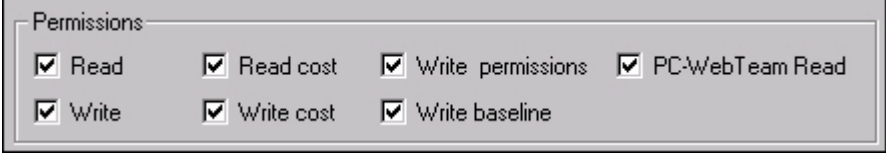


Figure 5. PS Suite Release 2 ACL Permissions

From the individuals and/or organizations that you have defined, you can apply specific permissions to any of your PS8 Version 8.5 files.

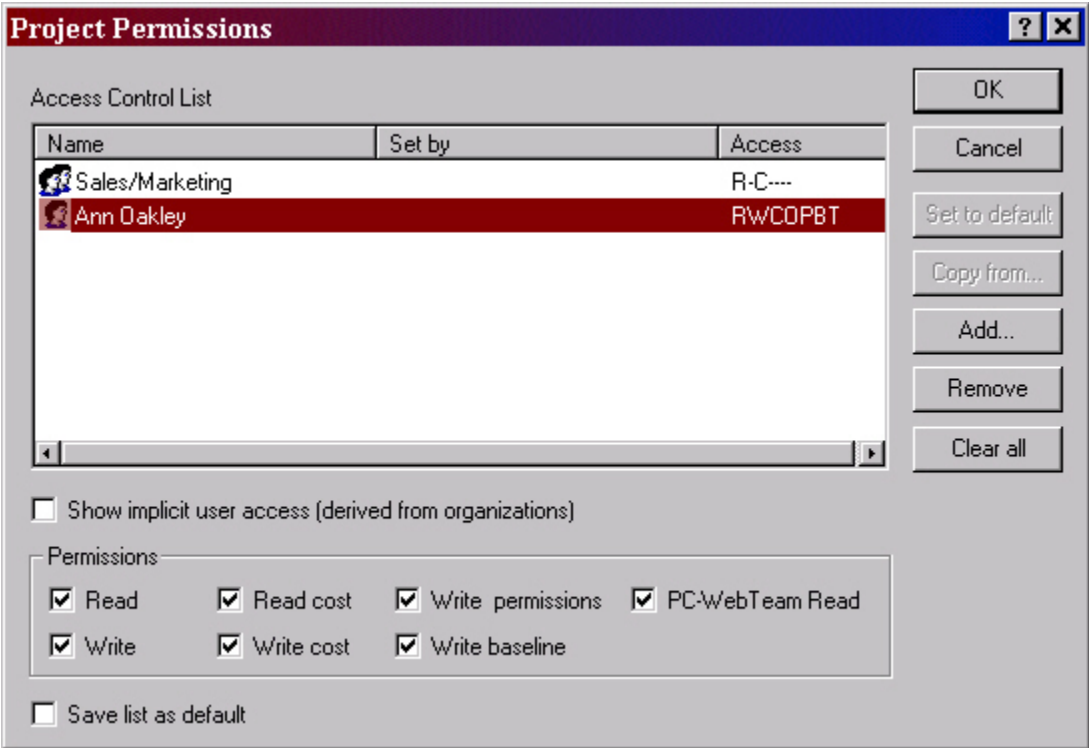


Figure 6. PS8 Version 8.5's Project Permissions Dialog Box with Assignments

Once your project or other PS8 Version 8.5 file is saved, your permissions are then permanently fixed to the file. For security purposes, those individuals and/or groups that have been assigned the 'Write Permissions' permission can only alter permissions.

Any user that has not been explicitly assigned access will not be able to open, access, or modify the file.

PS8 provides a secure method of performing project management within your organization. PS8 and PC-Admin - finally, a way to lock down and secure one of your organization's most precious assets.